



# RUBBERCOVER™ EPDM

**QUICK, EASY AND TROUBLE-FREE ROOFING SYSTEM**





“

**Quick and easy installation, extremely durable ... RubberCover EPDM is definitely my go-to solution for flat roofs!**

”

# A complete system that stays trouble-free

Elevate's RubberCover EPDM is a high-performance roofing system for residential flat roofing applications limited to 150 m<sup>2</sup> (\*). The membrane is available in two thicknesses: 1.1 mm and 1.5 mm. Based on an EPDM synthetic rubber membrane with a life expectancy of over 50 years, it is one of the most durable and sustainable roofing systems on the market. It is compatible with a wide range of substrates, making it perfect for renovations as well as new build projects.

In short, RubberCover EPDM is designed to stand the test of time and bring peace of mind and enjoyment to homeowners.

## STANDARD SIZES (OTHER DIMENSIONS AVAILABLE UPON REQUEST)

**3.05 m x 7.62 m (23.24 m<sup>2</sup>)**

Packaging: 1.83 m long roll

**4.57 m x 7.62 m (34.82 m<sup>2</sup>)**

Packaging: 1.83 m long roll

**6.10 m x 7.62 m (46.48 m<sup>2</sup>)\*\***

Packaging: 1.83 m long roll

(\*) This limit may vary depending on local regulations and available certifications

(\*\*) Only available for 1.1 mm thick membrane



**Installation. No trouble.**

The RubberCover EPDM roofing membrane is lightweight, flexible, easy to work with and allows a short installation time. It comes in large sheets which can cover most residential roofs in one piece without any field seaming. Rolls are easy to handle and store and there's no need for special tools. Provided the structure is sound, RubberCover EPDM can be used on virtually any new or existing flat roof.

**No flame. No trouble.**

No flame is needed to install the RubberCover EPDM system. The membrane is simply adhered to the substrate using a contact adhesive. This cold application process thoroughly minimizes the risk of fire accidents.

**Environment. No trouble.**

Due to its exceptional durability, easy maintenance and suitability for recycling, RubberCover EPDM is one of the most eco-friendly roofing products on the market. Several third-party studies have proven that EPDM membranes have a lower environmental impact compared to other roofing membranes. RubberCover EPDM is chemically stable and releases no toxic ingredients. This makes it suitable for the recuperation of rainwater for sanitary use. In addition, the system is compatible with extensive green roofs and photovoltaic systems, further contributing towards a sustainable environment. Our production facilities hold ISO 9001 certifications, which reflect our commitment to quality.

**Trouble-free for years!**

RubberCover EPDM has excellent resistance to UV, ozone, microorganisms and severe weather conditions. It can elongate over 300% to accommodate building movements and temperature fluctuations. The membrane retains its physical properties over several decades and requires little or no maintenance. Additions like skylights or extensions can be integrated easily without affecting the system's performance.

**Accessories. No trouble.**

Only a few easy to use accessories are needed to install the RubberCover EPDM system properly.

**MAKE THE MOST OF YOUR ROOF**

RubberCover EPDM is compatible with green, solar, blue and accessible roofs. For this type of applications, we recommend the use of the 1.5 mm thick membrane.

TYPE OF APPLICATION	RUBBERCOVER EPDM 1.1 MM	RUBBERCOVER EPDM 1.5 MM
GARDEN SHED	✓	✓
GARAGE/CARPORT	✓	✓
NEW ROOF/EXTENSION	✓	✓
PORCH	✓	✓
GREEN ROOF	-	✓
SOLAR ROOF (PV)	-	✓
BLUE ROOF	-	✓
ACCESSIBLE ROOF	-	✓

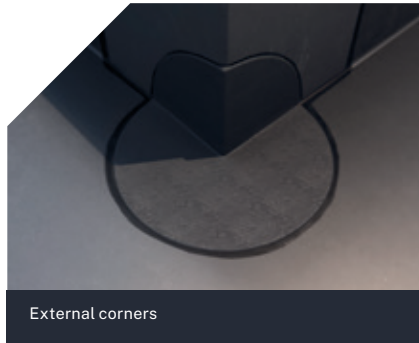


## ROOF DETAILS MADE SIMPLE

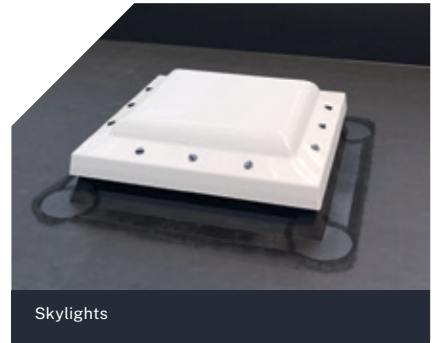
**Skylights, chimneys, drains.... every roof is different. RubberCover EPDM makes waterproofing around details easy and straightforward, with proven results.**



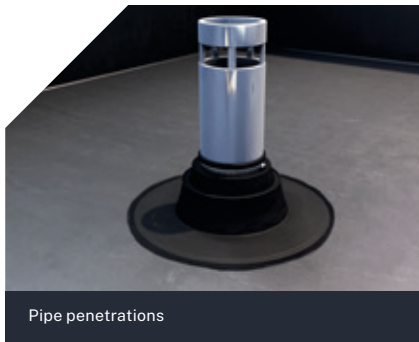
Seams



External corners



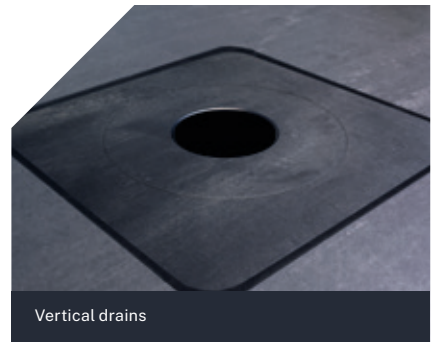
Skylights



Pipe penetrations

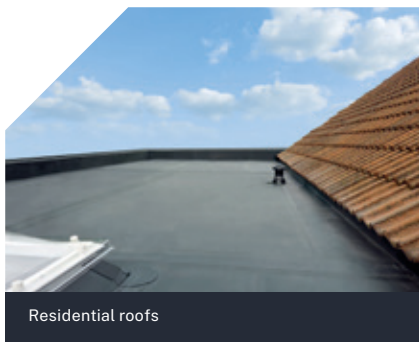


Scuppers

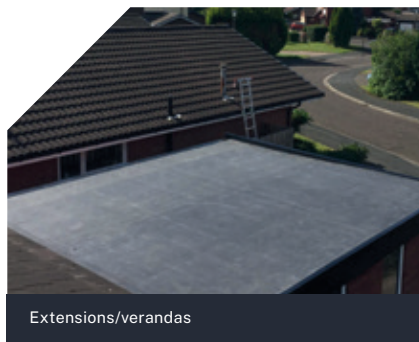


Vertical drains

## THE IDEAL SOLUTION FOR A MULTITUDE OF SMALL RESIDENTIAL FLAT ROOFING APPLICATIONS



Residential roofs



Extensions/verandas



Garages/carports



Porches



Garden sheds



Green/ solar/ blue/ accessible roofs



# ELEVATE

---

**For more information contact:**

Holcim Solutions and Products EMEA BV  
Ikaroslaan 75  
1930 Zaventem  
BELGIUM

[HolcimElevate.com](http://HolcimElevate.com)

This brochure is meant only to highlight Elevate products and specifications. Information is subject to change without notice. All products and specifications are listed in approximate weights and measurements. For complete product and detail information, please refer to the technical information posted on [www.holcimElevate.com](http://www.holcimElevate.com). Holcim takes responsibility for furnishing quality materials which meet Holcim's published product specifications. As neither Holcim itself nor its representatives practice architecture, Holcim offers no opinion on and expressly disclaims any responsibility for the soundness of any structure on which its products may be applied. The selection of the appropriate product and its correct application is the responsibility of the customer and not of Holcim. If questions arise as to the soundness of a structure or its ability to support a planned installation properly, the owner should obtain opinions of competent structural engineers before proceeding. Holcim accepts no liability for any structural failure or for resultant damages and no Holcim Representative is authorized to vary this disclaimer.