

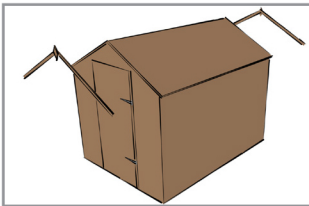
INSTALLATION

shedGUARD EPDM SHED ROOF

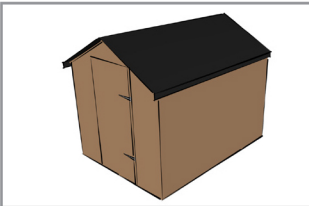
What you will need:

- shedGUARD rubber
- Water Based Adhesive
- Roller or Brush to apply the Adhesive
- Trim (if not supplied with your shed/ outbuilding)

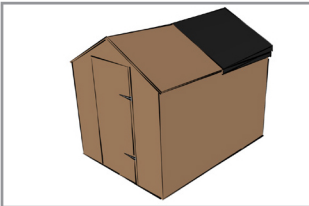
Guide:



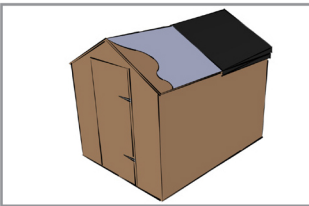
1. Remove any trim battens.



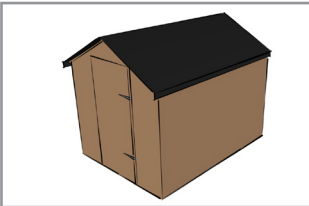
2. Lay the EPDM over the roof deck ensuring equal overlap on all sides and leave to relax for 20 minutes.



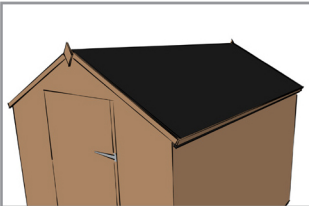
3. Fold half of the liner back on itself.



4. Apply adhesive to the exposed wooden deck. While the adhesive is still wet, lay the EPDM back over the deck and brush out any bubbles or creases with a soft broom.



5. Repeat for the other half of the roof.



6. Fold the corners to neaten, trim any excess and fit the trim battens. Your roof is now watertight!